

1:20,000 RECONNAISSANCE FISH AND FISH HABITAT INVENTORY
ZYMOETZ RIVER WATERSHED
440-000000-
KITNAYAKWA PLANNING AREA
FISHERIES / INTERPRETIVE MAP
SKEENA CELLULOSE INC.
KALUM FOREST DISTRICT
1999
MAPSHEET # 93L032 Map 7 of 9

Scale 1:20,000
Contour Interval (20m) Projection UTM

Date: 2000/02/01 (yyyy/mm/dd)

Company: **AW** of **TRITON** Environmental Consultants Ltd.

STREAM INFORMATION SUMMARY

Interim Locational Point (ILP)
Watershed Code: 123-123456-12345

Reach Summary Symbol
Fish Code(s): CO DV RB
2-12 S2 () Inferred

Channel Properties
Gradient
Channel Width
Stream Classification

Sample Site ID
Sample Site
Watershed Code: 123-123456-12345
Waterbody Identifier

Lake Summary Symbol
Lake (L) or Wetland (W)
Surface Area
Maximum Depth
pH
Conductivity
TDS
Littoral Area
Fish Code(s): L-175-8.0-6.8-28-20-15
CSU NFC NSC PCC RSC RB WSU

Stream Reach Boundary

Obstructions
Beaver Dam
Cascade
Eroded Bank
Alluvial Fan
Colluvial Fan
Talus Cone
Rock Outcrop
Slumping Bank

Features
Shump
Bedrock - confined
Landslide Debris
Canyon
Braided Stream

Enhancement / Management Activities
Fisheries Sensitive Zone

WSC Information
Hydrometric station: 12AB123

Stream Classification
Fish Present (Confirmed)
Fish Not Present (Confirmed)
No Visible Channel
Fish Present (Inferred)
Fish Not Present (Inferred)

TRIM Base Map Anomalies
Field-identified Stream
Base Map Discontinuity

Base Map Features
River / Stream
River / Stream - intermittent
River / Stream - indefinite
Lake
Lake - intermittent
Lake - indefinite
Marsh
Swamp
Glacier
Icefield
Sand / Gravel Bar
Island
Road - loose surface
Road - rough surface
Index Contour
Index Contour - indefinite
Project Boundary

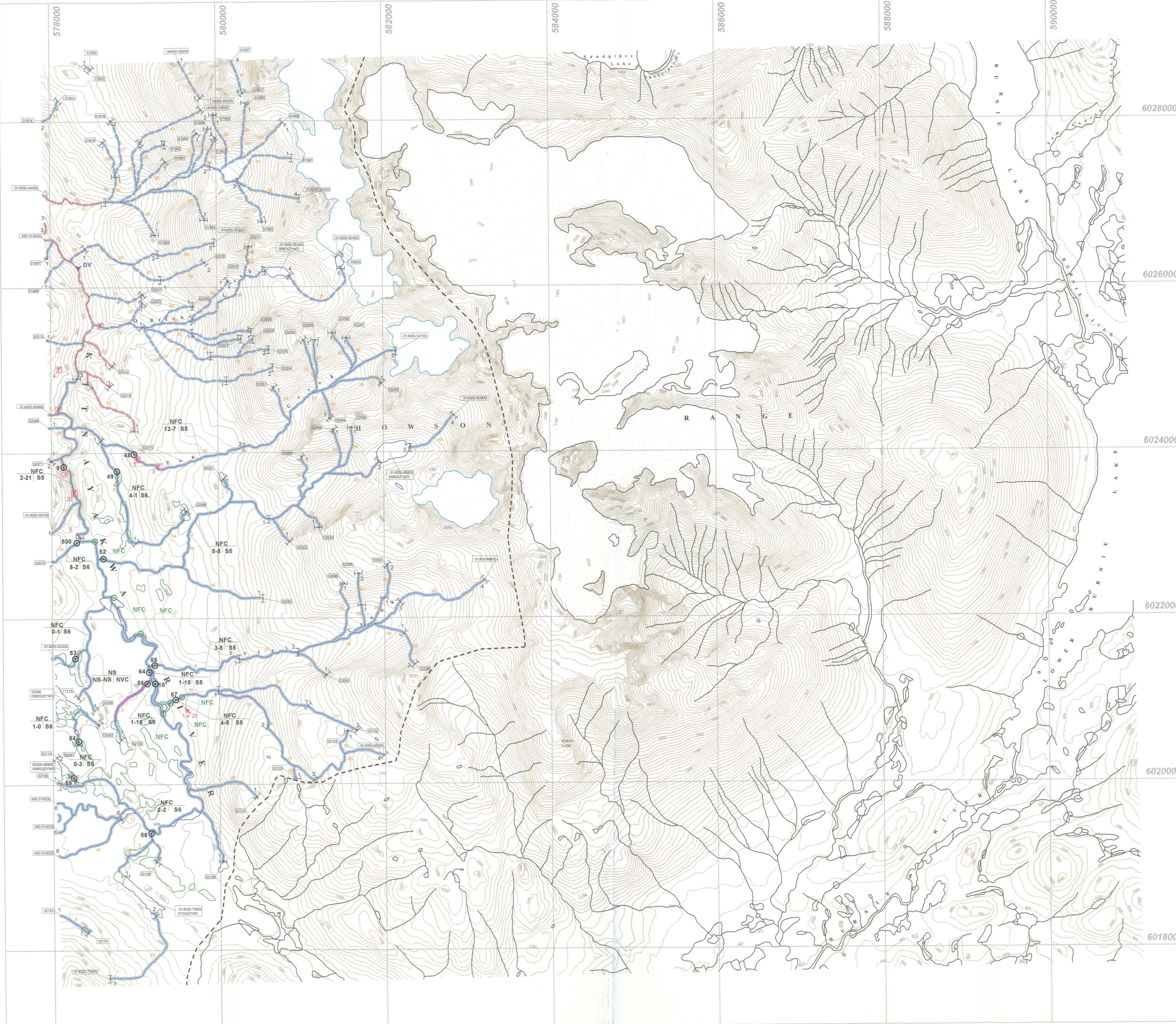
* NOTE: Gradients were calculated from TRIM maps during planning Phase 1 2 3 of this project.

Present		Historical	
CODE	DESCRIPTION	CODE	DESCRIPTION
NFC	No Fish Caught	Y	End of Fish Use/No Fish Use
NS	Not Sampled	Y	Fish Presence - Salmon
NFU	No Fish Use	Y	Fish Presence - Sport
BT	Bull Trout	Y	Fish Presence - Regionally Significant
CH	Chinook Salmon	Y	Fish Presence - Other
CO	Coho Salmon	Y	Fish Observation - Salmon
CT	Cutthroat Trout	Y	Fish Observation - Sport
DV	Dolly Varden	Y	Fish Obs. - Regionally Significant
RB	Rainbow Trout	Y	Fish Observation - Other
EVU	End of Fish Use	Y	Fish Spawning Limit - Salmon
		Y	Sample Site - No Fish Use

Source: MELP

PROJECT STUDY AREA BOUNDARY

093L051 Map 1 of 9
093L052 Map 2 of 9
093L053 Map 3 of 9
093L054 Map 4 of 9
093L055 Map 5 of 9
093L056 Map 6 of 9
093L057 Map 7 of 9
093L058 Map 8 of 9
093L059 Map 9 of 9



"This product has been accepted as being in accordance with approved standards within the limits of Ministry quality assurance procedures. Users are cautioned that interpreted information on this product developed for the purposes of the Forest Practices Code Act and Regulations, for example stream classifications, is subject to review by a statutory decision maker for the purposes of determining whether or not to approve an operational plan."

INVENTORY SOURCE INFORMATION CODES			
CODE	DESCRIPTION	CODE	DESCRIPTION
BASE	Base Map	APP	Airphoto, Planimetric
TRIM	1:20,000 TRIM Maps	VID	Video
NYS	1:50,000 NYS Maps	VPC	Video, Corrected
OTH	Other Map Source	N/A	Not Applicable
STR SYM	Stream Symbol	OTH	Other
INV	Field Inventory	LOC	Location Information
SS	Summary	SS	Summary
N/A	Not Applicable	N/A	Not Applicable
OTH	Other	OTH	Other

FOREST PRACTICES CODE RIPARIAN CLASSES (STREAM CLASSIFICATION)				
Riparian Class	Average Channel Width (m)	Reserve Zone Width (m)	Management Zone Width (m)	Total RMA Width (m)
S1 - Large Stream	> 200	8	100	100
S2 - Medium Stream	> 20	50	20	70
S3 - Small Stream	> 5 < 20	30	20	50
S4 - Very Small Stream	< 5	20	20	40
S5 - Micro Stream	< 1.5	0	30	30
S6 - Headwater	< 1.5	0	30	30
S7 - Spring	< 1.5	0	30	30
S8 - Wetland	< 1.5	0	30	30

BASE MAP INFORMATION

Projection: UTM

Date: NAD83

UTM Zone: 9

INVENTORY SOURCE INFORMATION

BASE: TRIM STR SYM: INV

LOC: FDE LK SYM: INV

HAB: INV FISH: INV

DATE INV: 1999/09/01 INV MGMT: OTH